

Newton North High School

Newtonville, Massachusetts

GENERAL NOTES:

© GUND PARTNERSHIP INC



ARCHITECTURE | PLANNING

47 THORNDIKE STREET
CAMBRIDGE, MA 02141
617 | 250 6800
617 | 577 9614 FAX

CONSULTANT:

REVISIONS:

Site Plan Approval

DATE: 04 May 2006

SCALE: 1" = 40'-0"

DRAWN BY: NL

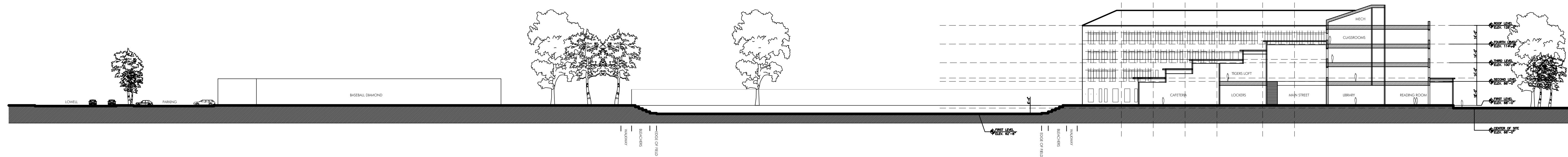
CHECKED BY: JP, DR

SHEET TITLE:
SITE SECTIONS

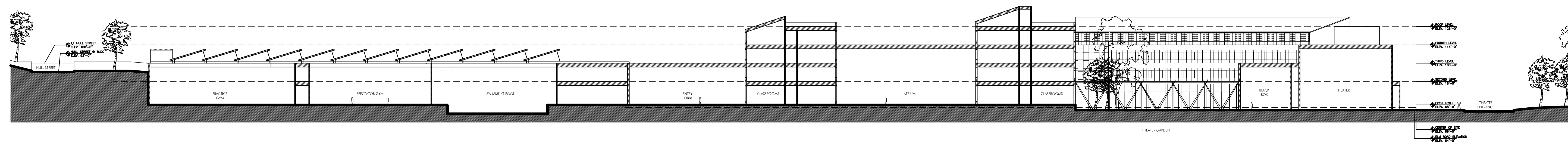
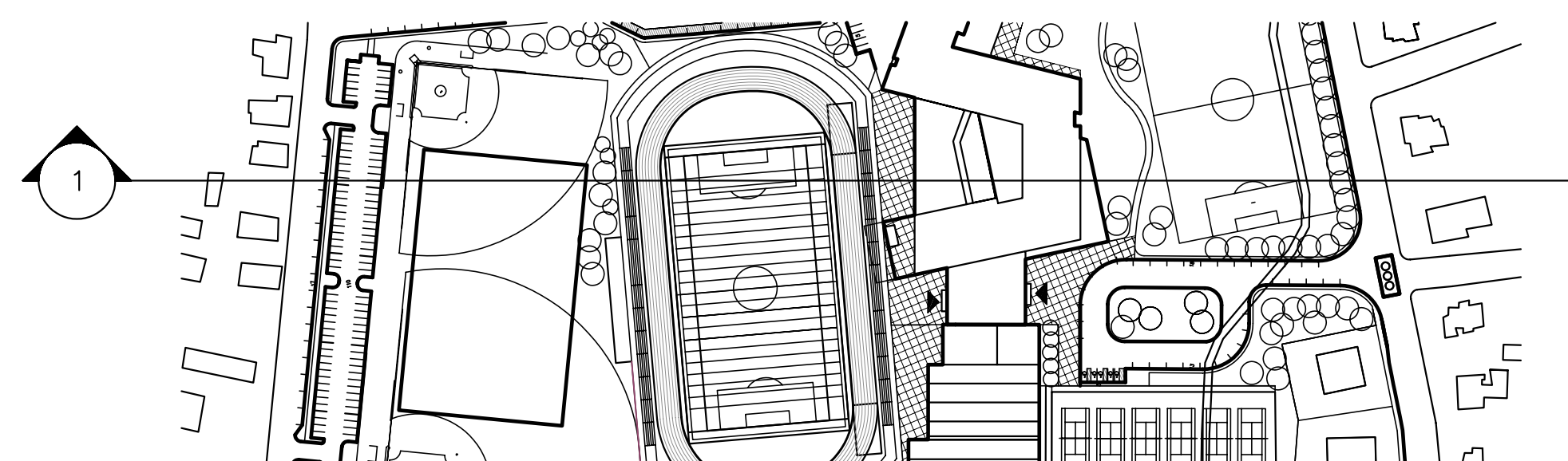
SHEET NUMBER:

A3.21

\\gpp\projects\2005\10newton.north\sub2004\1_csmr.dwg



1 SITE SECTION - LOOKING NORTH
SCALE: 1" = 40'-0"



2 SITE SECTION - LOOKING WEST
SCALE: 1" = 40'-0"

